

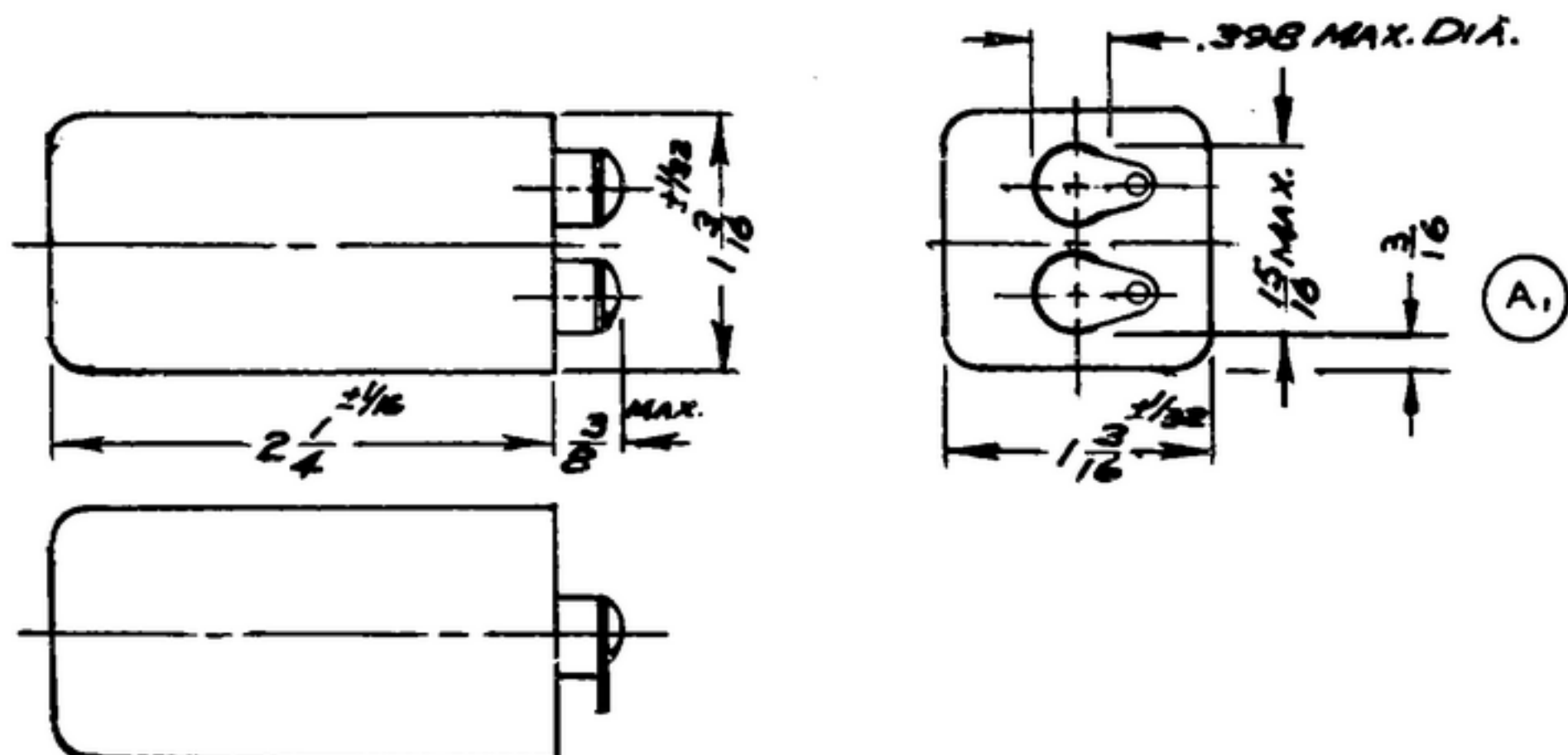
NOTICE: WHEN GOVERNMENT DRAWINGS, SPECIFICATIONS, OR OTHER DATA ARE USED FOR ANY PURPOSE OTHER THAN IN CONNECTION WITH A DEFINITELY RELATED GOVERNMENT PROCUREMENT OPERATION, THE UNITED STATES GOVERNMENT THEREBY INCURS NO RESPONSIBILITY NOR ANY OBLIGATION WHATSOEVER; AND THE FACT THAT THE GOVERNMENT MAY HAVE FORMULATED, FURNISHED, OR IN ANY WAY SUPPLIED THE SAID DRAWINGS, SPECIFICATIONS, OR OTHER DATA IS NOT TO BE REGARDED BY IMPLICATION OR OTHERWISE AS IN ANY MANNER LICENSING THE HOLDER OR ANY OTHER PERSON OR CORPORATION, OR CONVEYING ANY RIGHTS OR PERMISSION TO REPRODUCE, USE, OR SELL ANY PATENTED INVENTION THAT MAY IN ANY WAY BE RELATED THERETO.

THIS DOCUMENT HAS BEEN PURCHASED BY THE GOVERNMENT AND MAY BE REPRODUCED AND USED IN CONNECTION WITH ANY GOVERNMENT PROCUREMENT OR MAINTENANCE OPERATION.

* FOR INFORMATION ONLY. CONTRACTOR MAY AT HIS OPTION DEVIATE FROM THESE PROCESS DETAILS.

~~* SWE APPROVAL~~
~~SYM PR 10042-10~~

| REVISIONS | | | |
|----------------|---|----------|--------------------------------------|
| SYM | DESCRIPTION | DATE | APPROVAL |
| A ₂ | A ₁ WAS 1/4 A ₂ ADDED APPL SM-D-343620 | 6 NOV 59 | 42428-PC 59-A1-51 REV'D PME |



NOTES:

- PART MAY BE TYPE 62A, AS SUPPLIED BY SANGAMO ELECTRIC CO., MARION, ILL OR EQUAL, PROVIDING IT MEETS THE FOLLOWING REQUIREMENTS AND DIMENSIONS SHOWN.

DESCRIPTION: FIXED PAPER CAPACITOR IN METAL CONTAINER WITH MINERAL OIL IMPREGNANT AND HERMETICALLY SEALED.

CAPACITY: 2 MFD ±10%.

WORKING VOLTAGE: 500 VDC

TEST VOLTAGE: 1000 VDC.

CASE: NON-MAGNETIC, TINNED

OPERATING TEMPERATURE: -55°C TO +85°C.

MARKINGS: PART NUMBER, CAPACITY, AND WORKING VOLTAGE.

CAPACITANCE DRIFT: NOT TO EXCEED -10% AT -40°C.

TERMINAL BUSHINGS: MOLDED SILICONE RUBBER, DOW CORNING #80, AS SUPPLIED

BY DOW CORNING CORP., CHICAGO, ILL., OR EQUAL IS PREFERRED.

UNIT SHALL MEET APPLICABLE ELECTRICAL CHARACTERISTICS OF SPEC

MIL-C-25.

When Part No. Appears As 559-04209-2, Military Source Inspection is Required.

(A₂)

| COLLINS PART NO. | ITEM | REQD | PART NO. | DESCRIPTION | MATL | MATL SPEC |
|---------------------------------|------|------|----------|-------------|------|-----------|
| LIST OF MATERIAL | | | | | | |
| -COLLINS PART NO. 559-04209-002 | | | | | | |

| | | | | | | | | | |
|---|------|--------------------------------------|-------------|------------------------|--|--|--|--|--|
| DRAWN <i>R.E.B.</i> | | CHECKED <i>flm</i> | | APPROVED | | COLLINS-RADIO-60. -68848-RAPID-16WA 14214-PH-51-93 | | DEPARTMENT OF THE ARMY SIGNAL CORPS ENGINEERING LABORATORIES FORT MONMOUTH NEW JERSEY | |
| UNLESS OTHERWISE SPECIFIED: DECIMAL DIMENSIONS INCLUDING HOLE SIZES MAY VARY ±.005 FRACTIONAL DIMENSIONS INCLUDING HOLE SIZES MAY VARY ±1/64 MACHINED ANGLES MAY VARY ±1° SHEARED ANGLES MAY VARY ±.25° BROKEN ANGLES MAY VARY ±1° ECCENTRICITY BETWEEN ANY DIAMETERS ON THE SAME CENTERLINE SHALL NOT EXCEED .010 TOTAL INDICATOR READING. ALL DIMENSIONS ARE FINISH DIMENSIONS INCLUDING APPLIED FINISH AND ARE GIVEN IN INCHES. | | SIGNAL CORPS | | REVIEWED <i>PME</i> | | <i>CAPACITOR-FIXED</i> | | | |
| APPLICATION | | APPROVED <i>HLV</i> <i>PME</i> | | DATE 19 JAN '56 | | | | | |
| 558-0363-004 | 1 | SM-D-343620 | SM-D-248818 | SG-DL-248775 | | | | <i>SM-B-283236</i> | |
| COLLINS NO. | QTY. | NEXT ASSY | USED ON | | | | | | |